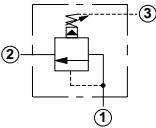
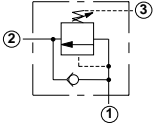
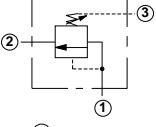
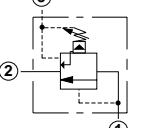
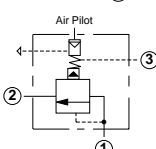
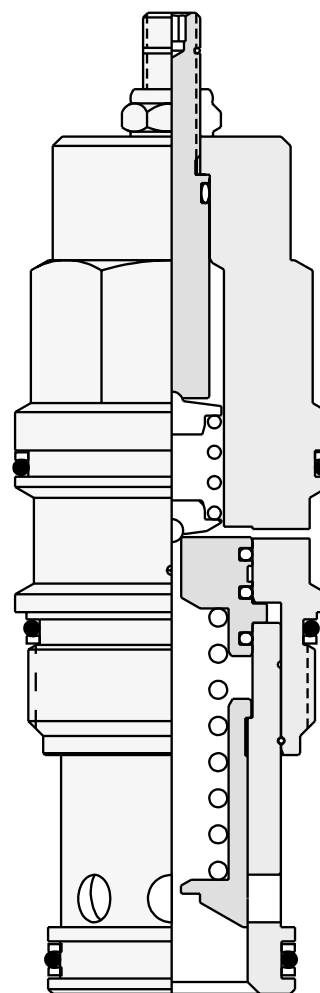


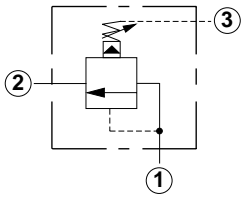
Sequence Cartridge Valves

	<i>Cartridge Type</i>	<i>Page</i>
	Pilot Operated	10
	Direct Acting with Check	10
	Direct Acting	11
	Pilot Operated, Kick-down	11
	Pilot Operated, Air Controlled, 20:1 Ratio	12



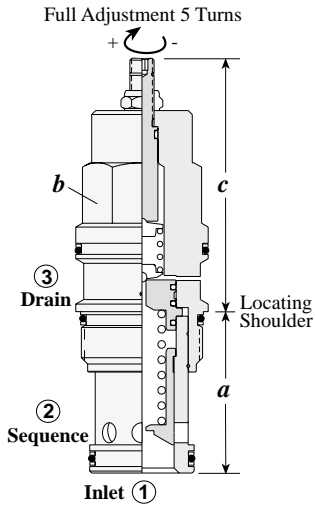
Sequence Valves

PILOT OPERATED



Capacity	Typical Cartridge Model Code	Cavity	Cartridge Dimensions					Installation Torque (lb. ft.)
			a	b	c			
					L	C	K	
7.5 GPM	RSBC – LAN	T - 163A	1.22	3/4"	2.55	2.63	2.77	25/30
15 GPM	RSDC – LAN	T - 11A	1.38	7/8"	2.50	2.56	2.75	30/35
30 GPM	RSFC – LAN	T - 2A	1.38	1 1/8"	2.81	2.88	3.06	45/50
60 GPM	RSHC – LAN	T - 17A	1.81	1 1/4"	3.28	3.31	3.53	150/160
120 GPM	RSJC – LAN	T - 19A	2.50	1 5/8"	3.94	4.09	4.19	350/375

OPTION ORDERING INFORMATION



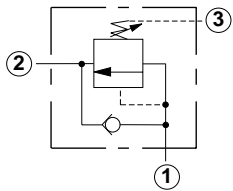
RS * C - * * *

Nominal Capacity	Control**	Adjustment Range	Seal
B 7.5 GPM*	L Standard Screw	A 100 - 3000 psi	N Buna-N
D 15 GPM	C Tamper Resistant	B 50 - 1500 psi	V Viton
F 30 GPM	K Handknob	C 150 - 6000 psi	
H 60 GPM		N 60 - 800 psi	
J 120 GPM		Q 60 - 400 psi	
		W 150 - 4500 psi	

Adjustment Range Options:
 A, B, C, and W are standard set at 1000 psi.
 N Option is standard set at 400 psi.
 Q Option is standard set at 200 psi.
 * Minimum setting 75 psi on all ranges.
Customer may specify pressure setting.

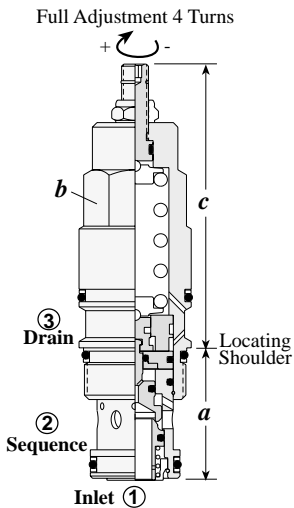
** See page 92 for information on Control Options

DIRECT ACTING WITH CHECK



Capacity	Typical Cartridge Model Code	Cavity	Cartridge Dimensions				Installation Torque (lb. ft.)
			a	b	c		
					L	C	
15 GPM	SCCA – LAN	T - 11A	1.38	7/8"	3.09	3.15	30/35
30 GPM	SCEA – LAN	T - 2A	1.38	1 1/8"	3.47	3.53	45/50
60 GPM	SCGA – LAN	T - 17A	1.81	1 1/4"	3.94	4.00	150/160
120 GPM	SCIA – LAN	T - 19A	2.50	1 5/8"	4.72	4.92	350/375

OPTION ORDERING INFORMATION



SC * A - * * *

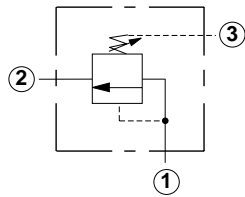
Nominal Capacity	Control**	Adjustment Range	Seal
C 15 GPM	L Standard Screw	A 500 - 3000 psi	N Buna-N
E 30 GPM	C Tamper Resistant	B 300 - 1500 psi	V Viton
G 60 GPM		C 2000 - 6000 psi	
I 120 GPM		D 200 - 800 psi	
		W 800 - 4500 psi	

Adjustment Range Options:
 A, B, and W are standard set at 1000 psi.
 C Option is standard set at 2000 psi.
 D Option is standard set at 400 psi.
Customer may specify pressure setting.

** See page 92 for information on Control Options

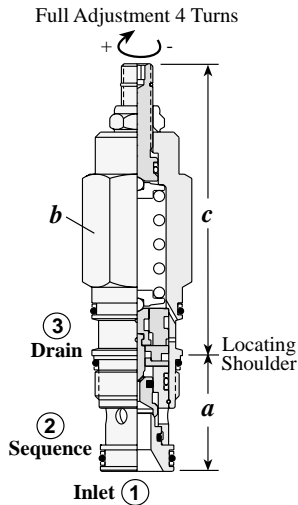
Sequence Valves

DIRECT ACTING



Capacity	Typical Cartridge Model Code	Cavity	Cartridge Dimensions				Installation Torque (lb. ft.)
			a	b	L	C	
15 GPM	SXCA - LAN	T - 11A	1.38	7/8"	3.09	3.15	30/35
30 GPM	SXEA - LAN	T - 2A	1.38	1 1/8"	3.47	3.53	45/50

OPTION ORDERING INFORMATION



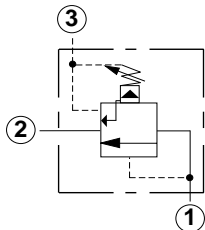
SX * A - * * *

Nominal Capacity	Control**	Adjustment Range	Seal
C 15 GPM	L Standard Screw	A 500 - 3000 psi	N Buna-N
E 30 GPM	C Tamper Resistant	B 300 - 1500 psi	V Viton
		C 2000 - 6000 psi	
		D 200 - 800 psi	
		W 800 - 4500 psi	

Adjustment Range Options:
 A, B, and W are standard set at 1000 psi.
 C Option is standard set at 2000 psi.
 D Option is standard set at 400 psi.
 Customer may specify pressure setting.

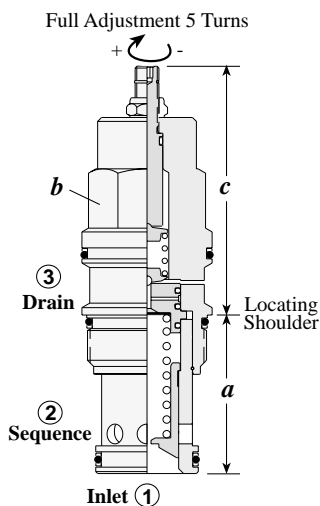
** See page 92 for information on Control Options

PILOT OPERATED, KICK-DOWN



Capacity	Typical Cartridge Model Code	Cavity	Cartridge Dimensions				Installation Torque (lb. ft.)	
			a	b	L	C		K
15 GPM	SQDB - LAN	T - 11A	1.38	7/8"	2.50	2.56	2.75	30/35
30 GPM	SQFB - LAN	T - 2A	1.38	1 1/8"	2.81	2.88	3.06	45/50
60 GPM	SQHB - LAN	T - 17A	1.81	1 1/4"	3.28	3.31	3.53	150/160
120 GPM	SQJB - LAN	T - 19A	2.50	1 5/8"	3.94	4.09	4.19	350/375

OPTION ORDERING INFORMATION



SQ * B - * * *

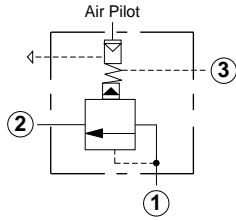
Nominal Capacity	Control**	Adjustment Range	Seal
D 15 GPM	L Standard Screw	A 100 - 3000 psi	N Buna-N
F 30 GPM	C Tamper Resistant	B 50 - 1500 psi	V Viton
H 60 GPM	K Handknob	C 150 - 6000 psi	
J 120 GPM		D 25 - 800 psi	
		E 25 - 400 psi	
		W 150 - 4500 psi	

Adjustment Range Options:
 A, B, C, and W are standard set at 1000 psi.
 D Option is standard set at 400 psi.
 E Option is standard set at 200 psi.
 Customer may specify pressure setting.

** See page 92 for information on Control Options

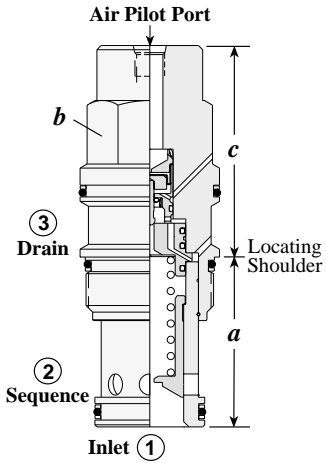
Sequence Valves

PILOT OPERATED, AIR CONTROLLED, 20:1 RATIO



Capacity	Typical Cartridge Model Code	Cavity	Cartridge Dimensions				Installation Torque (lb. ft.)
			a	b	A	B	
30 GPM	RSFE - ABN	T - 2A	1.38	1 1/8"	2.00	-	45/50
60 GPM	RSHE - BBN	T - 17A	1.81	1 1/4"	-	2.47	150/160
120 GPM	RSJE - BBN	T - 19A	2.50	1 5/8"	-	3.12	350/375

OPTION ORDERING INFORMATION



RS ★ E - ★ B ★

<p>Nominal Capacity</p> <p>F 30 GPM</p> <p>H 60 GPM</p> <p>J 120 GPM</p>	<p style="text-align: center;">Control**</p> <p><i>Available for RSFE only</i></p> <p>A 1/4" NPTF Pilot Port at end of Cartridge*</p> <p><i>Available for RSHE, RSJE only</i></p> <p>B SAE-4 Pilot Port at end of Cartridge*</p>	<p style="text-align: center;">Adjustment Range</p> <p>B 50 - 1500 psi</p>	<p style="text-align: center;">Seal</p> <p>N Buna-N</p> <p>V Viton</p>
--	---	--	---

* Maximum air pilot pressure should not exceed 150 psi.