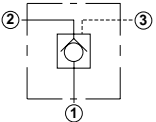
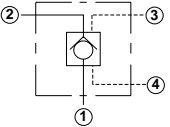
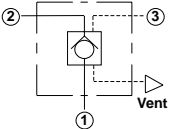
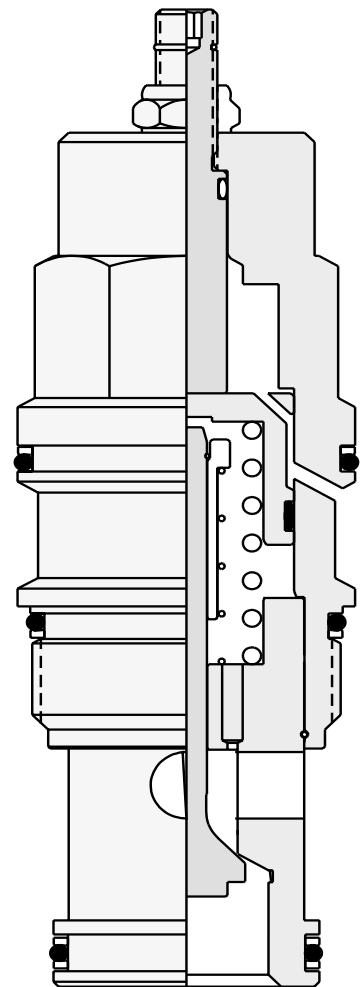


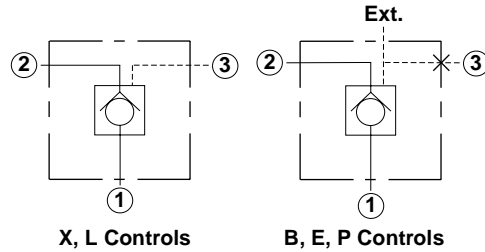
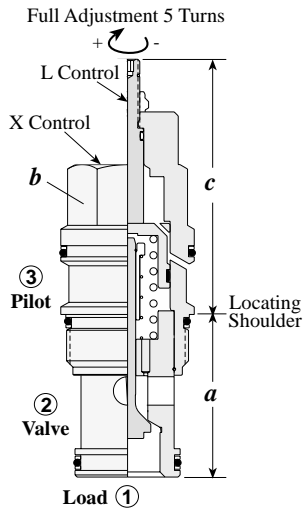
Pilot Operated Check Cartridge Valves

	<i>Cartridge Type</i>	<i>Page</i>
	Pilot Operated	20
	Vented, 4 Port Cavity	21
	Atmospherically Referenced, 3 Port Cavity	21



Pilot Operated Check Valves

PILOT OPERATED



Capacity	Typical Cartridge Model Code	Cavity	Cartridge Dimensions				Installation Torque lb. ft.
			a	b	c		
					X,B,E,P	L	
7.5 GPM	CKBB - XCN	T - 163A	1.22	3/4"	1.25	1.76	25/30
15 GPM	CKCB - XCN	T - 11A	1.38	7/8"	1.19	2.50	30/35
30 GPM	CKEB - XCN	T - 2A	1.38	1 1/8"	1.38	2.81	45/50
60 GPM	CKGB - XCN	T - 17A	1.81	1 1/4"	1.81	3.28	150/160
120 GPM	CKIB - XCN	T - 19A	2.50	1 5/8"	2.31	3.94	350/375

OPTION ORDERING INFORMATION

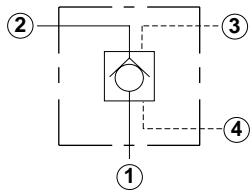
CK **		- ***		
Nominal Capacity	Version	Control**	Cracking Pressure	Seal
B * 7.5 GPM	B Bleed through Pilot	X Standard Pilot	A 4 psi	N Buna-N
C 15 GPM	D Sealed Pilot Piston	L Manual Load Release	B 15 psi	V Viton
E 30 GPM		B 1/4" BSPP External Pilot Port 3 blocked	C 30 psi	
G 60 GPM		E SAE-4 External Pilot Port 3 blocked	D 50 psi	
I 120 GPM		P 1/4" NPTF External Pilot Port 3 blocked	E 75 psi	
			F 100 psi	

** See page 92 for information on Control Options

*CKBB, CKBD available with C and E Cracking Pressures Only.

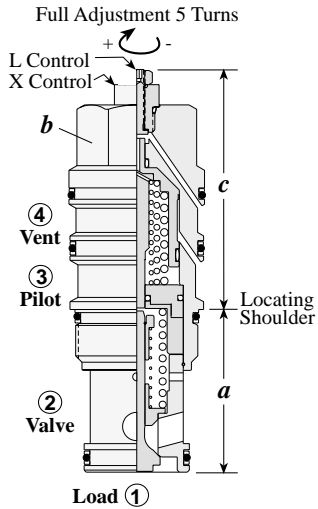
Pilot Operated Check Valves

VENTED, 4 PORT CAVITY



Capacity	Typical Cartridge Model Code	Cavity	Cartridge Dimensions				Installation Torque (lb. ft.)
			a	b	X	L	
15 GPM	CVCV - XCN	T - 21A	1.38	7/8"	2.11	2.34	30/35
30 GPM	CVEV - XCN	T - 22A	1.38	1 1/8"	2.34	2.56	45/50
60 GPM	CVGV - XCN	T - 23A	1.81	1 1/4"	2.81	3.03	150/160
120 GPM	CVIV - XCN	T - 24A	2.50	1 5/8"	3.50	3.77	350/375

OPTION ORDERING INFORMATION

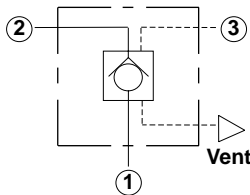


CV * V - * * *

Nominal Capacity	Control**	Cracking Pressure	Seal
C 15 GPM	X Standard Pilot	A 4 psi	N Buna-N
E 30 GPM	L Manual Load Release	B 15 psi	V Viton
G 60 GPM		C 30 psi	
I 120 GPM		D 50 psi	
		E 75 psi	
		F 100 psi	

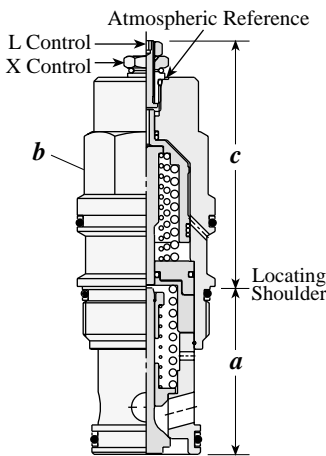
** See page 92 for information on Control Options

ATMOSPHERICALLY REFERENCED, 3 PORT CAVITY



Capacity	Typical Cartridge Model Code	Cavity	Cartridge Dimensions				Installation Torque (lb. ft.)	
			a	b	X	L		S
15 GPM	CKCV - XCN	T - 11A	1.38	7/8"	1.99	2.24	1.68	30/35
30 GPM	CKEV - XCN	T - 2A	1.38	1 1/8"	2.31	2.56	2.0	45/50
60 GPM	CKGV - XCN	T - 17A	1.81	1 1/4"	2.78	3.02	2.47	150/160
120 GPM	CKIV - XCN	T - 19A	2.50	1 5/8"	3.30	3.77	-	350/375

OPTION ORDERING INFORMATION



CK * V - * * *

Nominal Capacity	Control**	Cracking Pressure	Seal
C 15 GPM	X Standard Pilot	A 4 psi	N Buna-N
E 30 GPM	S External SAE-4 Vent Port	B 15 psi	V Viton
G 60 GPM		C 30 psi	
I 120 GPM	L Manual Load Release External Vent	D 50 psi	
		E 75 psi	
		F 100 psi	

** See page 92 for information on Control Options

NOTES