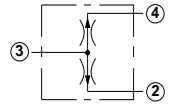
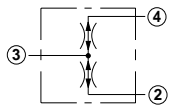
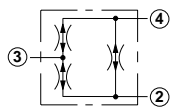
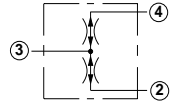
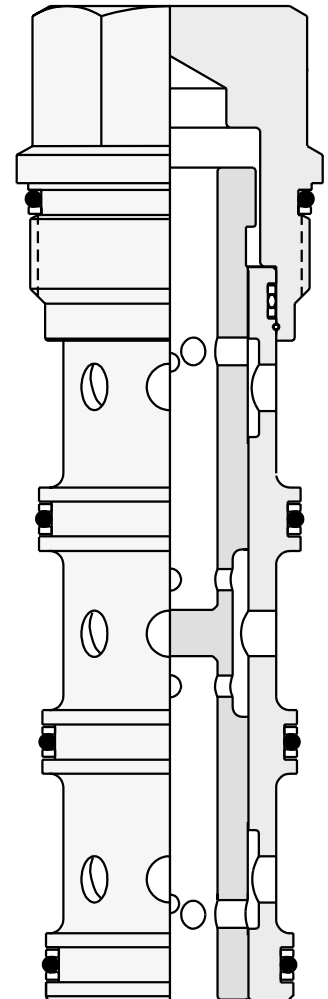


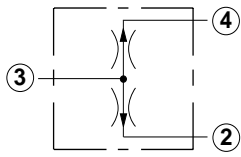
Flow Divider / Combiner Cartridge Valves

	<i>Cartridge Type</i>	<i>Page</i>
	Divider	50
	Divider / Combiner, Closed Center	50
	Synchronizing Divider / Combiner	51
	High Capacity Divider / Combiner	51



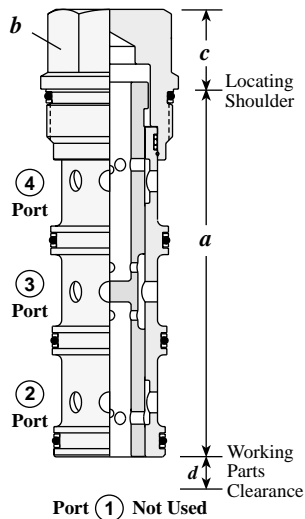
Flow Divider / Combiner Valves

DIVIDER



Capacity	Typical Cartridge Model Code	Cavity	Cartridge Dimensions				Installation Torque (lb. ft.)
			a	b	c	d	
.6-3 GPM	FSBD - XAN	T - 31A	3.35	7/8"	.75	.14	30/35
1.5-8 GPM	FSCD - XAN	T - 31A	3.35	7/8"	.75	.14	30/35
3-15 GPM	FSDD - XAN	T - 32A	3.63	1 1/8"	.69	.15	45/50
6-30 GPM	FSED - XAN	T - 33A	4.50	1 1/4"	.97	.21	150/160
12-60 GPM	FSFD - XAN	T - 34A	5.50	1 5/8"	1.19	.27	350/375

OPTION ORDERING INFORMATION

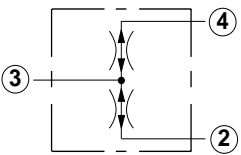


FS * D - X * *

Nominal Capacity	Control**	Flow Proportion	Seal
B .6-3 GPM	X Non-adjustable	A 50/50 Flow Split	N Buna-N
C 1.5-8 GPM		B 40/60 Flow Split	V Viton
D 3-15 GPM		C 33/67 Flow Split	
E 6-30 GPM			
F 12-60 GPM			

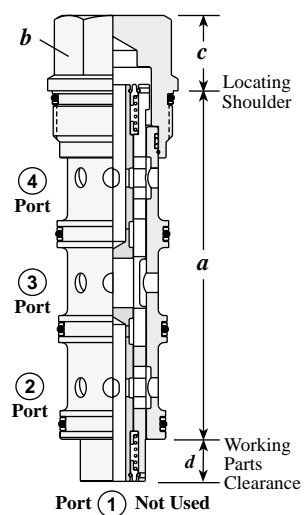
Reverse Flow Path is unpredictable
Divisional Accuracy =
FSCD, FSDD, FSED and FSFD:
± 6.5 % at minimum input flow
± 3.5 % at maximum input flow
FSBD:
± 4.5 % at minimum input flow
± 2.5 % at maximum input flow

DIVIDER / COMBINER, CLOSED CENTER



Capacity	Typical Cartridge Model Code	Cavity	Cartridge Dimensions				Installation Torque (lb. ft.)
			a	b	c	d	
.6-3 GPM	FSBA - XAN	T - 31A	3.35	7/8"	.75	.65	30/35
1.5-8 GPM	FSCA - XAN	T - 31A	3.35	7/8"	.75	.65	30/35
3-15 GPM	FSDA - XAN	T - 32A	3.63	1 1/8"	.69	.77	45/50
6-30 GPM	FSEA - XAN	T - 33A	4.50	1 1/4"	.97	.99	150/160
12-60 GPM	FSFA - XAN	T - 34A	5.50	1 5/8"	1.19	.91	350/375

OPTION ORDERING INFORMATION



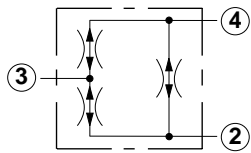
FS * A - X A *

Nominal Capacity	Control**	Flow Proportion	Seal
B .6-3 GPM	X Non-adjustable	A 50/50 Flow Split	N Buna-N
C 1.5-8 GPM			V Viton
D 3-15 GPM			
E 6-30 GPM			
F 12-60 GPM			

Divisional Accuracy (Combining and Dividing) =
± 4.5 % at minimum input flow
± 2.5 % at maximum input flow

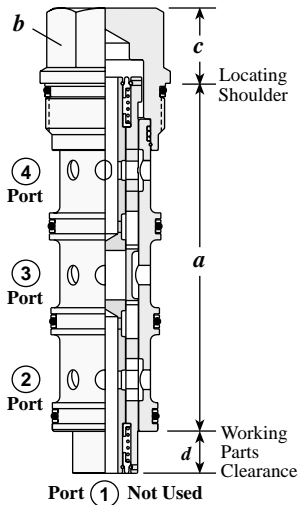
Flow Divider / Combiner Valves

SYNCHRONIZING DIVIDER / COMBINER



Capacity	Typical Cartridge Model Code	Cavity	Cartridge Dimensions				Installation Torque (lb. ft.)
			a	b	c	d	
.6-3 GPM	FSBS – XAN	T - 31A	3.35	7/8"	.75	.65	30/35
1.5-8 GPM	FSCS – XAN	T - 31A	3.35	7/8"	.75	.65	30/35
3-15 GPM	FSDS – XAN	T - 32A	3.63	1 1/8"	.69	.77	45/50
6-30 GPM	FSES – XAN	T - 33A	4.50	1 1/4"	.97	.99	150/160
12-60 GPM	FSFS – XAN	T - 34A	5.50	1 5/8"	1.19	.91	350/375

OPTION ORDERING INFORMATION

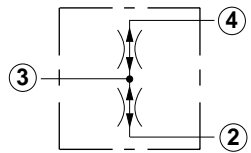


FS ★ S – X A ★

<p>Nominal Capacity</p> <p>B .6-3 GPM</p> <p>C 1.5-8 GPM</p> <p>D 3-15 GPM</p> <p>E 6-30 GPM</p> <p>F 12-60 GPM</p>	<p>Control**</p> <p>X Non-adjustable</p>	<p>Flow Proportion</p> <p>A 50/50 Flow Split</p>	<p>Seal</p> <p>N Buna-N</p> <p>V Viton</p>
---	--	--	---

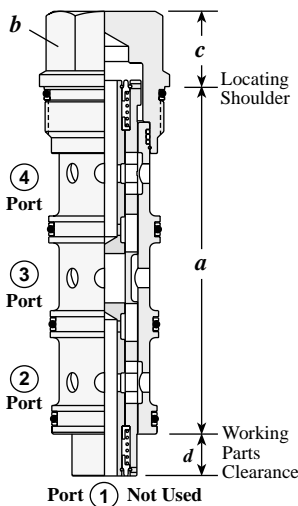
Divisional Accuracy (Combining and Dividing) =
± 4.5 % at minimum input flow
± 2.5 % at maximum input flow
Synchronizing Flow per Leg:
FSBS: .16 - .25 GPM
FSCS: .2 - .5 GPM
FSDS: .3 - .6 GPM
FSES: .8 - 1.5 GPM
FSFS: 2.4 - 3.5 GPM

HIGH CAPACITY DIVIDER / COMBINER



Capacity	Typical Cartridge Model Code	Cavity	Cartridge Dimensions				Installation Torque (lb. ft.)
			a	b	c	d	
2-10 GPM	FSCH – XAN	T - 31A	3.35	7/8"	.75	.65	30/35
4-20 GPM	FSDH – XAN	T - 32A	3.63	1 1/8"	.69	.77	45/50
8-40 GPM	FSEH – XAN	T - 33A	4.50	1 1/4"	.97	.99	150/160
15-80 GPM	FSFH – XAN	T - 34A	5.50	1 5/8"	1.19	.91	350/375

OPTION ORDERING INFORMATION



FS ★ H – X A ★

<p>Nominal Capacity</p> <p>C 2-10 GPM</p> <p>D 4-20 GPM</p> <p>E 8-40 GPM</p> <p>F 15-80 GPM</p>	<p>Control**</p> <p>X Non-adjustable</p>	<p>Flow Proportion</p> <p>A 50/50 Flow Split</p>	<p>Seal</p> <p>N Buna-N</p> <p>V Viton</p>
---	--	--	---

Divisional Accuracy (Combining and Dividing) =
± 6.5 % at minimum input flow
± 4.0 % at maximum input flow