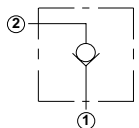
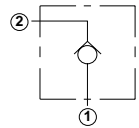
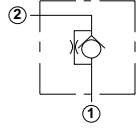
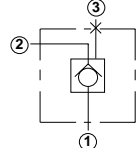
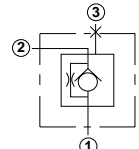
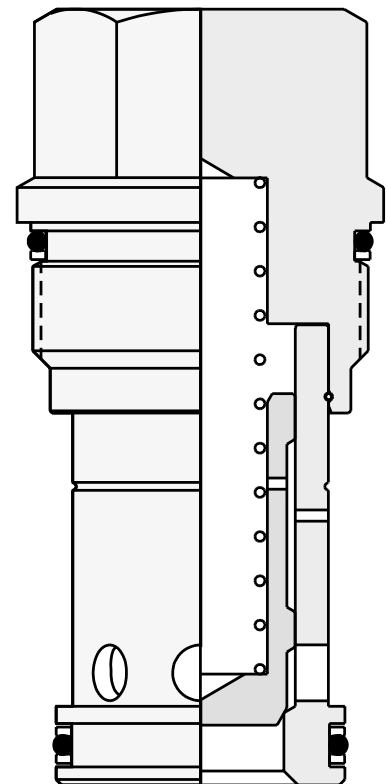


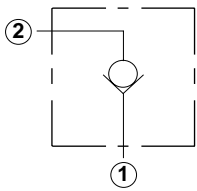
# Check Cartridge Valves

	<i>Cartridge Type</i>	<i>Page</i>
	1 to 2 Free Flow	36
	2 to 1 Free Flow	36
	2 to 1 Free Flow, with Customer Specified Orifice	37
	2 to 1 Free Flow, Port 3 Blocked, 3 Port Cavity	37
	2 to 1 Free Flow, with Customer Specified Orifice, Port 3 Blocked, 3 Port Cavity	38



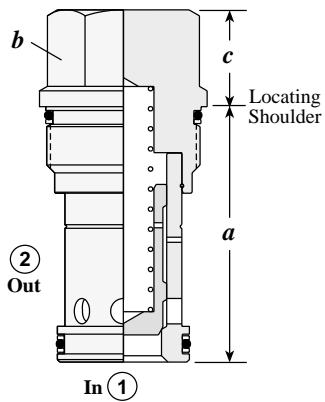
# Free Flow Check Valves

## 1 TO 2 FREE FLOW



Capacity	Typical Cartridge Model Code	Cavity	Cartridge Dimensions			Installation Torque (lb. ft.)
			a	b	c X	
10 GPM	CXBA – XCN	T - 162A	1.22	3/4"	.82	25/30
20 GPM	CXDA – XCN	T - 13A	1.38	7/8"	.75	30/35
40 GPM	CXFA – XCN	T - 5A	1.62	1 1/8"	.69	45/50
80 GPM	CXHA – XCN	T - 16A	2.44	1 1/4"	.97	150/160
160 GPM	CXJA – XCN	T - 18A	3.13	1 5/8"	1.19	350/375

### OPTION ORDERING INFORMATION

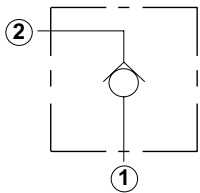


**CX \* A - \* \* \***

Nominal Capacity	Control**	Cracking Pressure	Seal
<b>B</b> 10 GPM	<b>X</b> Non-adjustable	<b>A</b> 4 psi	<b>N</b> Buna-N
<b>D</b> 20 GPM		<b>B</b> 15 psi	<b>V</b> Viton
<b>F</b> 30 GPM		<b>C</b> 30 psi	
<b>H</b> 80 GPM		<b>D</b> 50 psi	
<b>J</b> 160 GPM		<b>E</b> 75 psi	
		<b>F</b> 100 psi	

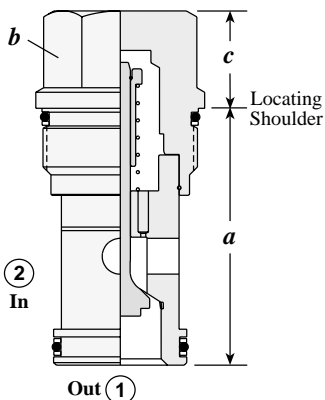
\*\* See page 92 for information on Control Options

## 2 TO 1 FREE FLOW



Capacity	Typical Cartridge Model Code	Cavity	Cartridge Dimensions			Installation Torque (lb. ft.)
			a	b	c X	
7.5 GPM	CXAD – XCN	T - 162A	1.22	3/4"	.82	25/30
15 GPM	CXCD – XCN	T - 13A	1.38	7/8"	.75	30/35
30 GPM	CXED – XCN	T - 5A	1.62	1 1/8"	.69	45/50
60 GPM	CXGD – XCN	T - 16A	2.44	1 1/4"	.97	150/160
120 GPM	CXID – XCN	T - 18A	3.13	1 5/8"	1.19	350/375

### OPTION ORDERING INFORMATION



**CX \* D - \* \* \***

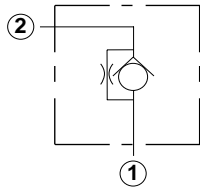
Nominal Capacity	Control**	Cracking Pressure	Seal
<b>A*</b> 7.5 GPM	<b>X</b> Non-adjustable	<b>A</b> 4 psi	<b>N</b> Buna-N
<b>C</b> 15 GPM		<b>B</b> 15 psi	<b>V</b> Viton
<b>E</b> 30 GPM		<b>C</b> 30 psi	
<b>G</b> 60 GPM		<b>D</b> 50 psi	
<b>I</b> 120 GPM		<b>E</b> 75 psi	
		<b>F</b> 100 psi	

\*\* See page 92 for information on Control Options

\*CXAD available with A, C, E Cracking Pressures Only.

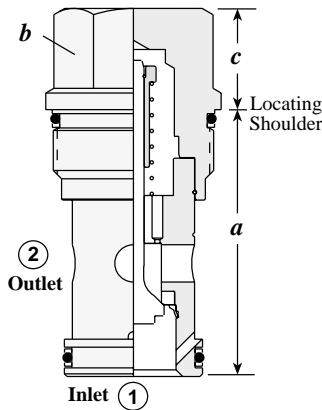
## Free Flow Check Valves

### 2 TO 1 FREE FLOW, WITH CUSTOMER SPECIFIED ORIFICE



Capacity	Typical Cartridge Model Code	Cavity	Cartridge Dimensions			Installation Torque (lb. ft.)
			a	b	$\frac{c}{X}$	
7.5 GPM	CNAC - XCN	T - 162A	1.22	3/4"	.82	25/30
15 GPM	CNCC - XCN	T - 13A	1.38	7/8"	.75	30/35
30 GPM	CNEC - XCN	T - 5A	1.62	1 1/8"	.69	45/50
60 GPM	CNGC - XCN	T - 16A	2.44	1 1/4"	.97	150/160
120 GPM	CNIC - XCN	T - 18A	3.13	1 5/8"	1.19	350/375

### OPTION ORDERING INFORMATION



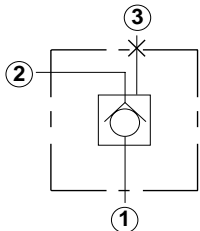
**CN \* C - \* \* \***

Nominal Capacity	Control**	Cracking Pressure	Seal
<b>A</b> 7.5 GPM	<b>X</b> Non-adjustable	<b>A</b> 4 psi	<b>N</b> Buna-N
<b>C</b> 15 GPM		<b>B</b> 15 psi	<b>V</b> Viton
<b>E</b> 30 GPM		<b>C</b> 30 psi	
<b>G</b> 60 GPM		<b>D</b> 50 psi	
<b>I</b> 120 GPM		<b>E</b> 75 psi	
		<b>F</b> 100 psi	

**Customer specified orifice setting range:**  
 CNAC: .015 - .062 in.  
 CNCC: .015 - .062 in.  
 CNEC: .015 - .078 in.  
 CNGC: .015 - .094 in.  
 CNIC: .015 - .125 in.

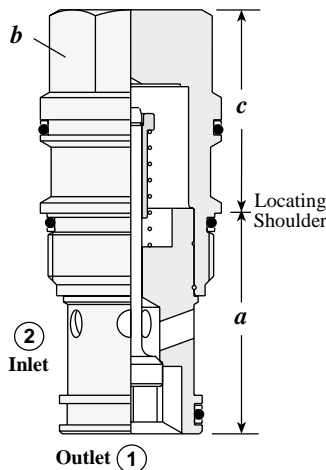
*\*\* See page 92 for information on Control Options*

### 2 TO 1 FREE FLOW, PORT 3 BLOCKED, 3 PORT CAVITY



Capacity	Typical Cartridge Model Code	Cavity	Cartridge Dimensions			Installation Torque (lb. ft.)
			a	b	$\frac{c}{X}$	
15 GPM	CXCE - XCN	T - 11A	1.38	7/8"	1.19	30/35
30 GPM	CXEE - XCN	T - 2A	1.38	1 1/8"	1.38	45/50
60 GPM	CXGE - XCN	T - 17A	1.81	1 1/4"	1.81	150/160
120 GPM	CXIE - XCN	T - 19A	2.50	1 5/8"	2.31	350/375

### OPTION ORDERING INFORMATION



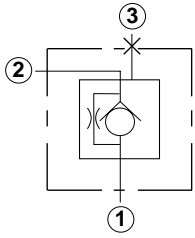
**CX \* E - \* \* \***

Nominal Capacity	Control**	Cracking Pressure	Seal
<b>C</b> 15 GPM	<b>X</b> Non-adjustable	<b>A</b> 4 psi	<b>N</b> Buna-N
<b>E</b> 30 GPM		<b>B</b> 15 psi	<b>V</b> Viton
<b>G</b> 60 GPM		<b>C</b> 30 psi	
<b>I</b> 120 GPM		<b>D</b> 50 psi	
		<b>E</b> 75 psi	
		<b>F</b> 100 psi	

*\*\* See page 92 for information on Control Options*

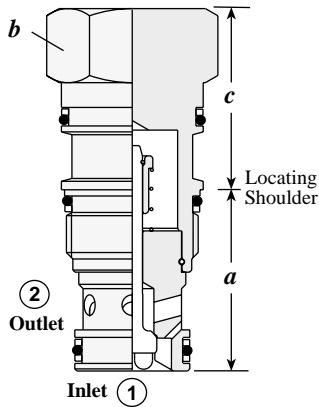
## Free Flow Check Valves

**2 TO 1 FREE FLOW, WITH CUSTOMER SPECIFIED ORIFICE,  
PORT 3 BLOCKED, 3 PORT CAVITY**



Capacity	Typical Cartridge Model Code	Cavity	Cartridge Dimensions			Installation Torque (lb. ft.)
			a	b	c	
15 GPM	CNCD - XCN	T - 11A	1.38	7/8"	1.19	30/35
30 GPM	CNED - XCN	T - 2A	1.38	1 1/8"	1.38	45/50
60 GPM	CNGD - XCN	T - 17A	1.81	1 1/4"	1.81	150/160
120 GPM	CNID - XCN	T - 19A	2.50	1 5/8"	2.31	350/375

## OPTION ORDERING INFORMATION



**CN \* D - \* \* \***

Nominal Capacity	Control**	Cracking Pressure	Seal
<b>C</b> 15 GPM	<b>X</b> Non-adjustable	<b>A</b> 4 psi	<b>N</b> Buna-N
<b>E</b> 30 GPM		<b>B</b> 15 psi	<b>V</b> Viton
<b>G</b> 60 GPM		<b>C</b> 30 psi	
<b>I</b> 120 GPM		<b>D</b> 50 psi	
		<b>E</b> 75 psi	
		<b>F</b> 100 psi	

**Customer specified orifice setting range:**

CNCD: .015 - .062 in.  
 CNED: .015 - .078 in.  
 CNGD: .015 - .094 in.  
 CNID: .015 - .125 in.

\*\* See page 92 for information on Control Options